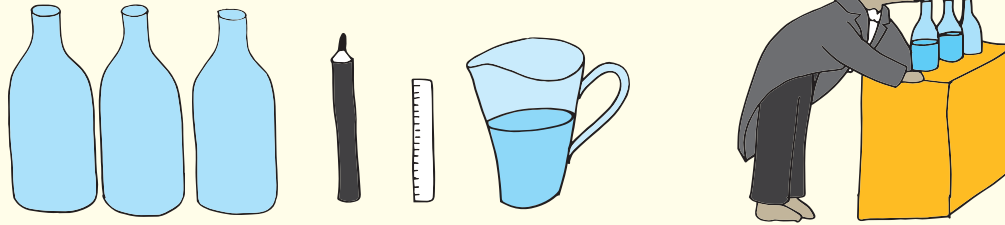
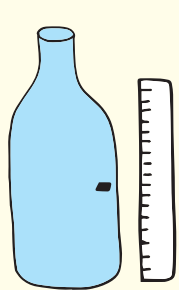


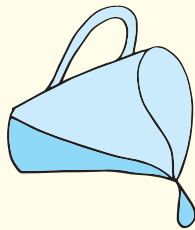
MAK**e** your own bottle music



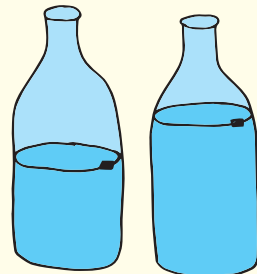
You will need- Three identical narrow-neck bottles (They can be glass or plastic), Permanent marker, ruler, water



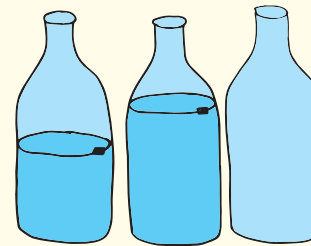
1. Measure the height of one of the bottles. Using the permanent marker and ruler, make a small mark at exactly halfway up the bottle.



2. Fill this bottle with water up to the mark you made.



3. On the second bottle make a small mark at exactly three quarters up. Fill this bottle with water up to the mark you just made.



4. Leave the third bottle empty. Blow across the tops of the bottles to make a sound. Hold the bottle upright and touch your lower lip to the edge of the bottle, pursing your upper lip and blowing gently over the opening.

5. When you get the angle and airflow just right, you will hear a musical note as the air in the open bottle resonates. How does the bottle sound? Did the empty bottle produce the lowest pitch? Did the bottle that was filled three quarters full with water make the highest pitch?

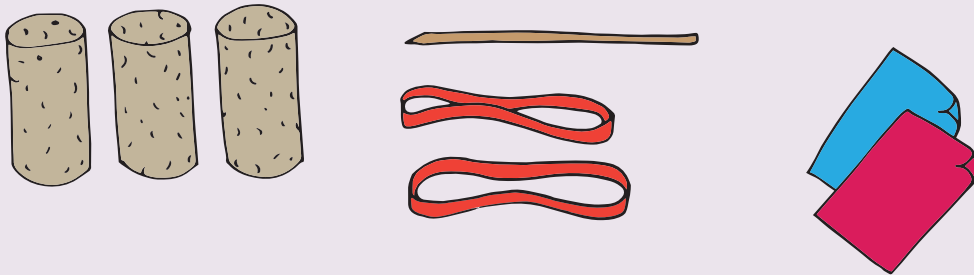
Steinway Piano



This is Britten's Steinway Model 'D' piano. This model, no 411810, was delivered to Britten's home at The Red House in September 1969, costing £2825 8s. It is currently located at The Red House within Britten's Library, where it is still played in concerts and performances.

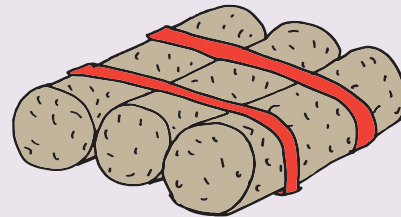
You can see this at The Red House

MAkE a cork sailing boat

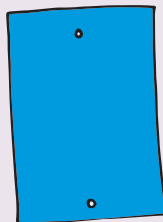


You will need- Three corks, Two rubberbands, Small stick with sharp end, Coloured paper.

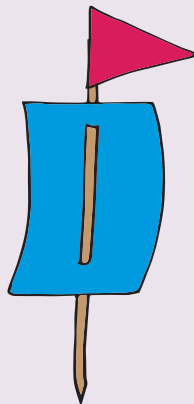
1. Place the three corks next to each other long sides together and secure with the elastic bands



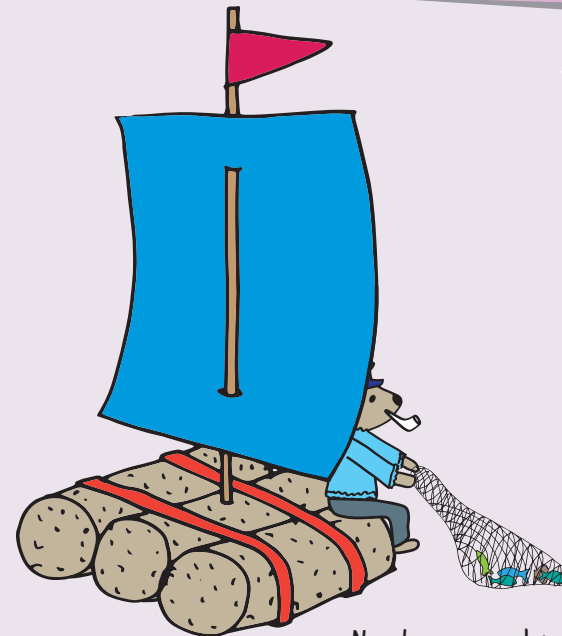
2. Cut out a square of paper to make the sail. Make two holes, top and bottom and push the stick through both holes



3. Cut out a flag and stick to the top of the mast.



4. Push the stick firmly into the middle cork to make the mast



Now have a go at sailing your boat on the model yacht pond!

Model yacht pond



The original Aldeburgh model yacht pond was built at Slaughden, to the south of Aldeburgh. Unfortunately the pond was constantly getting flooded by the encroaching sea and it was moved to where it is now, on the Moot Green.

The model yacht pond is at Moot Green