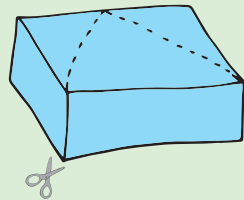


MAkE a squishy cheese

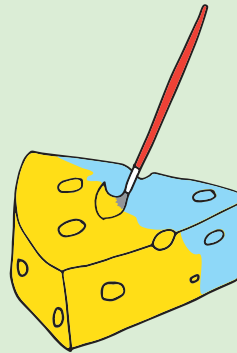
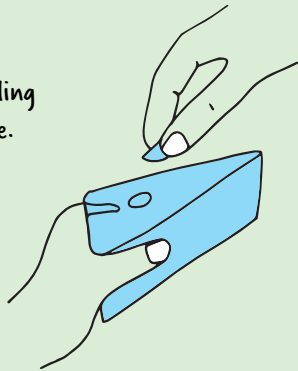


Make your own joke, squishy cheese
You will need- a sponge, a pair of scissors, yellow acrylic paint

1. Take your scissors and cut your sponge into a cheese wedge shape. (you may need an adult to help you do this).

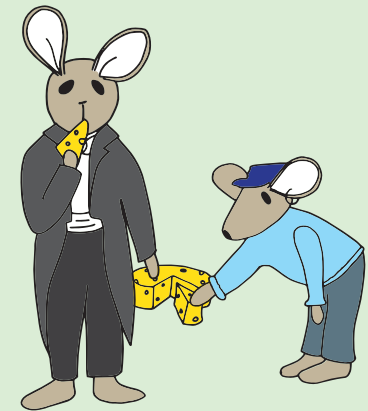
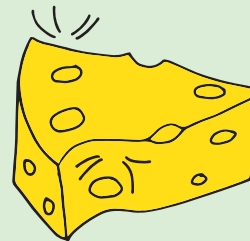


2. Add some holes to your cheese by gently pinching your sponge and pulling out a number of holes on the surface.



3. Next you need to colour your cheese with the acrylic paint. You are going to need at least 3 coats of paint and it takes about an hour between coats to dry.

4. Once you have added enough coats of paint to your cheese you should have a perfect squishy cheese that bounces back into shape when squashed.



Joke cheese



This seemingly innocent piece of Swiss cheese belonged to Benjamin Britten. It is a joke, wind-up, electric shock cheese that was made in Germany in the mid-20th century. I wonder who Britten played this prank on at The Red House?

You can see this at The Red House

WRITE a poem

Why not try and write a poem of your own?:

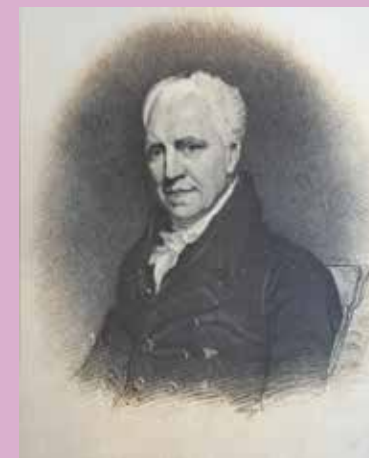
This is an acrostic poem, where the 1st letter of each line spells the word 'Aldeburgh'.

We have completed the first line for you.

A very special place by the sea
L
D
E
B
U
R
G
H

George Crabbe

George Crabbe was a British poet, born in Aldeburgh in 1754. During his early childhood, he lived in a small cottage the sea side of the Moot Hall, before the area and all cottages were washed away by the sea. His most famous poem 'The Borough' was written in 1810 and is set in Aldeburgh. The poem influenced the composer, Benjamin Britten, to write his opera 'Peter Grimes'.



You can see this at Aldeburgh Museum

Till we the outskirts of the Borough reach
And these half-buried buildings next the beach
Where hang at open doors the net and cork
While squalid sea-dames mend the meshy work.

