

BRITTENPEARS  
ARTS

# My Trip to Snape Maltings





# General Information

---

## Introduction

Britten Pears Arts is excited to welcome you to Snape Maltings for a performance of The Maple Tree with City of London Sinfonia. We hope you have a great visit and enjoy the concert.

To make your visit as enjoyable as possible, we have put together some information about getting to Snape Maltings and finding your way around, access facilities, parking, making your booking and what to expect when you get here. We hope you find it helpful!

If you have any questions about anything regarding your visit, please do get in touch and we will be happy to answer any questions you might have.

**01728 687100**

**[community@brittenpearsarts.org](mailto:community@brittenpearsarts.org)**

## What is a family performance?

This family performance is suitable for those with young children who may prefer space to move around, make noise, and come in and out of the space.

## What is a relaxed performance?

Adapted in a number of ways to reduce anxiety and create a supportive atmosphere, with adjusted lighting and sound levels, these performances are suitable for people who benefit from a relaxed environment including those with autism spectrum conditions, learning disabilities or other sensory and communication needs in a relaxed environment.

If you have any questions or would like to find out more about our relaxed performances, please contact 01728 687100 or email [community@brittenpearsarts.org](mailto:community@brittenpearsarts.org)

## Where is the performance?

The performance will take place in the Britten Studio which is in the Hoffmann Building at Snape Maltings. There is more information on how to find the Britten Studio later on in this document.

# General Access Information

## Access facilities

### For people who use a wheelchair or mobility scooter

We have the following dedicated spaces and provisions for wheelchair users:

- The wheelchair spaces in the concert hall are K3-K6 and K23-K26. The adapted toilets are situated in the Concert Hall Foyer.
- The wheelchair spaces in the Britten Studio are A3-A6. The adapted toilets are situated in the Hoffmann Building Foyer, adjacent to the Reekie Bar, and on the first floor, just off the Bakery which is accessible via lift.
- Transfer seats are available.
- Lifts: Snape Maltings Concert Hall, Hoffmann Building and the Granary Gallery have lift access to all levels.

Wheelchair spaces and transfer seats can be booked by calling the box office on 01728 687110 or by email: [boxoffice@brittenpearsarts.org](mailto:boxoffice@brittenpearsarts.org). A concession is available to companions of wheelchair users.

### For people who are deaf or hard of hearing

An infrared hearing system is available in the Concert Hall, and both infrared and induction loop hearing systems are available in the Britten Studio and Jerwood Kiln Studio in the Hoffmann Building.

### For people who are blind or have a visual impairment

Large print format available on request.

Guide dogs and assistance dogs are welcome at all of our performance venues and at the Red House. Please contact the box office so that we can discuss appropriate seating.

### Parking

Blue Badge holders can park in reserved areas adjacent to the Concert Hall and the Hoffmann building at Snape Maltings. Please contact the box office on 01728 687110 or email us at [boxoffice@brittenpearsarts.org](mailto:boxoffice@brittenpearsarts.org) to book a place. More information on how to find these car parking spaces are included later on in this document.

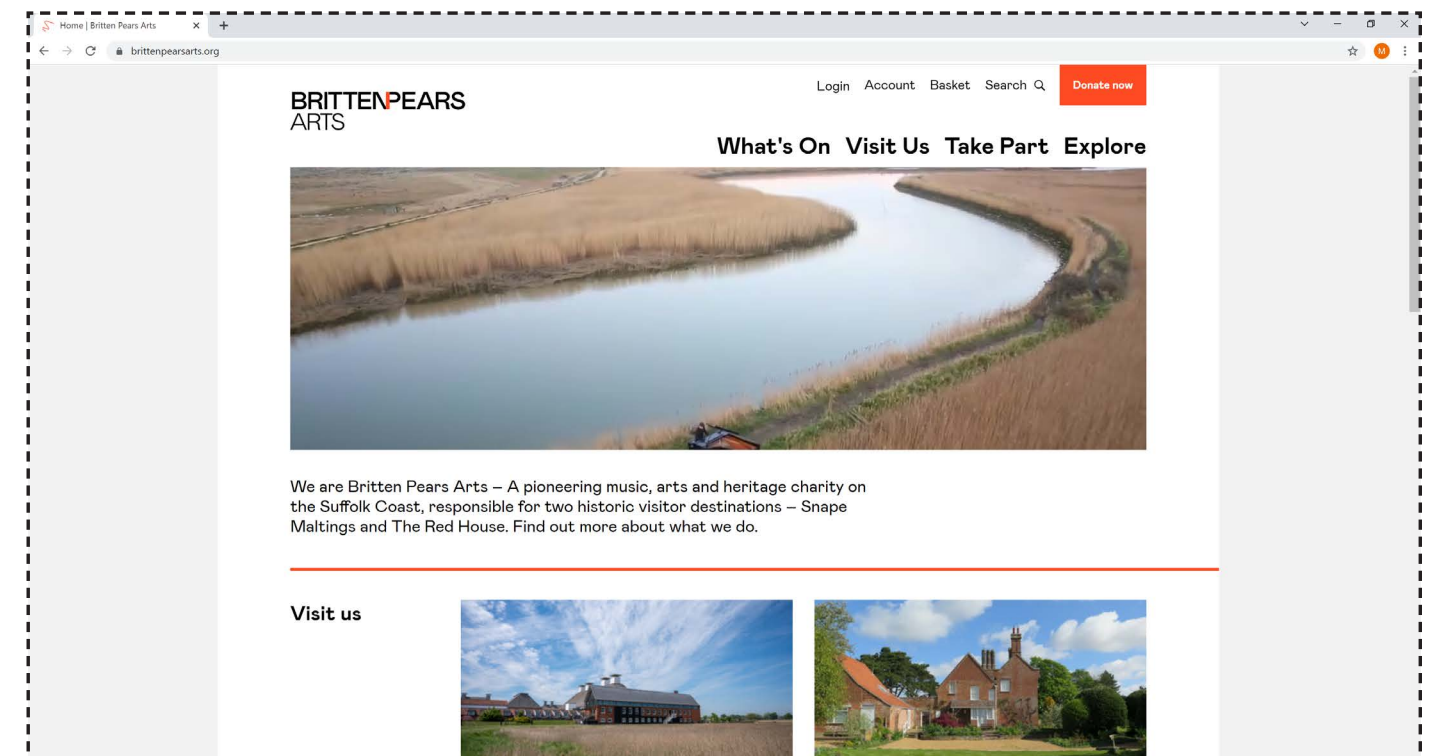
## Making your booking

We try to make booking your tickets as easy as possible for you, and we have a team of friendly Box Office staff who can help you make your booking.

To make a booking you can call our Box Office and a member of staff will be able to help you book your tickets. They will also be able to reserve any blue badge parking spaces and wheelchair spaces in the Britten Studio for you if required.

### Box Office – 01728 687110

You can also make your booking online via our website - [brittenpearsarts.org/events/the-maple-tree](https://brittenpearsarts.org/events/the-maple-tree)



# Additional Information

## Getting Here

Snape Maltings is located in the village of Snape, Suffolk, 6 miles from Aldeburgh on the Suffolk coast.

**Our address is: Snape Maltings, Snape, Suffolk, IP17 1SP**

### By car

From the A12, take the A1094 signposted towards Snape Maltings. Turn right at Snape Church onto the B1069, then continue through the village of Snape before turning left into Snape Maltings (postcode IP17 1SP). There is lots of free parking available on site.

### By bike

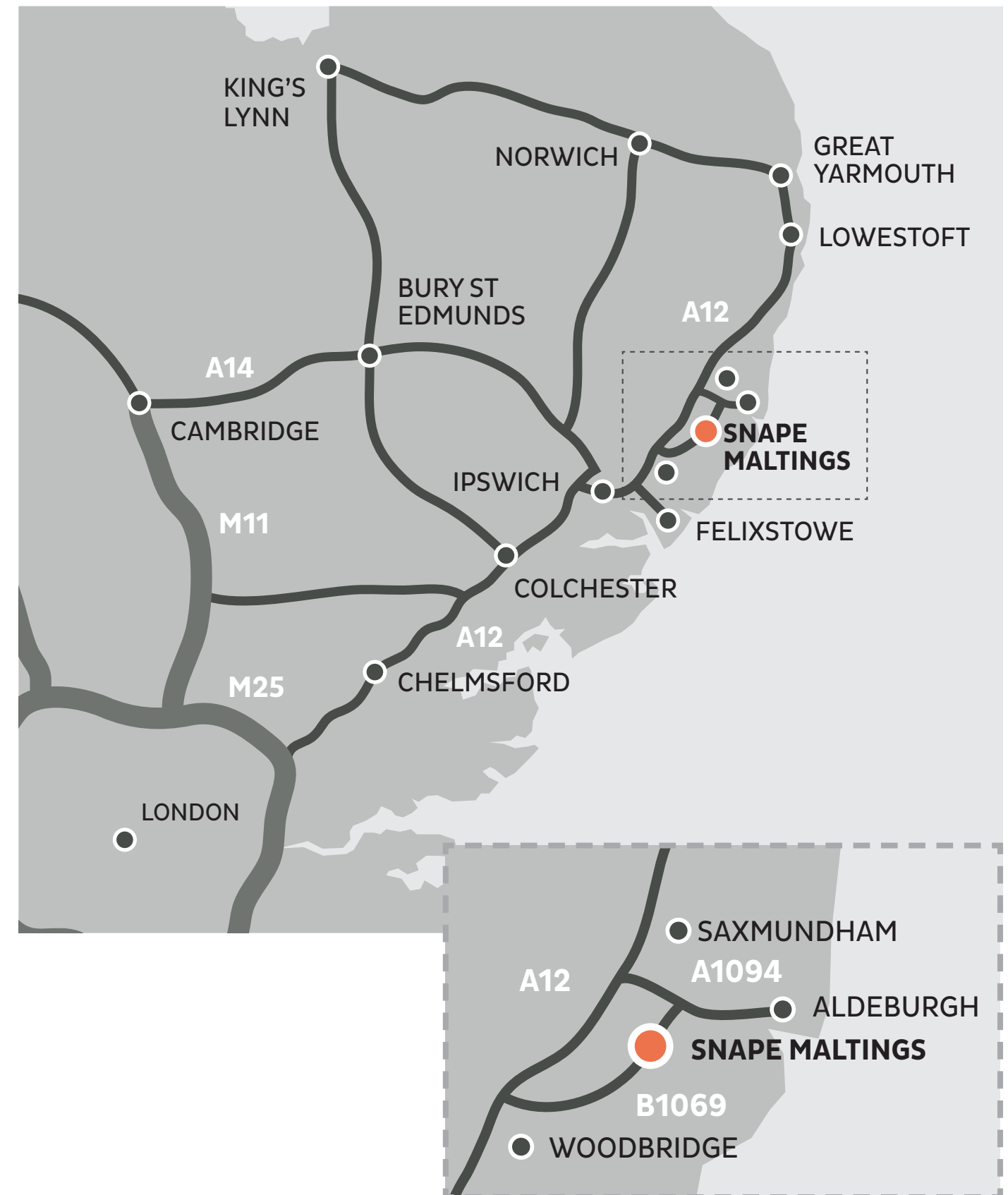
Trains on the Ipswich to Lowestoft line can accommodate a limited number of bikes free of charge on a first-come, first-served basis. On the London – Norwich intercity train line you will need to book a cycle reservation. Bike hire is available from SaxVelo.

### By train

The closest station is Saxmundham (4 miles) which is on the East Suffolk Ipswich - Lowestoft train line.

### By bus

Unfortunately, there is currently no bus service to Snape Maltings. However, you can contact CATS (Coastal Accessible Transport Services), which operates an on-demand service in the area.





## When you arrive

The entrance to the site can be found between Snape Bridge and the Plough & Sail pub.

Follow the road around to get to the car park.

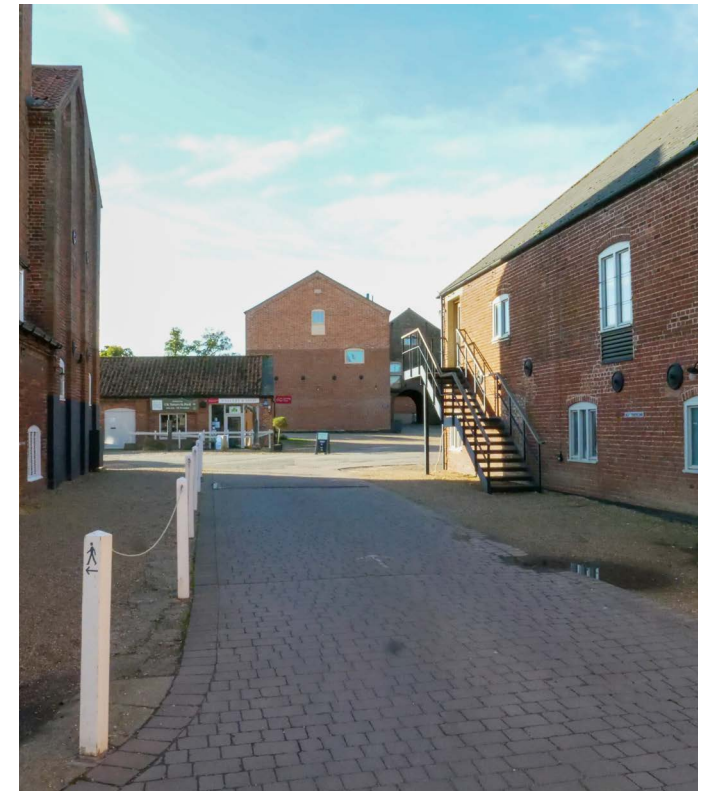
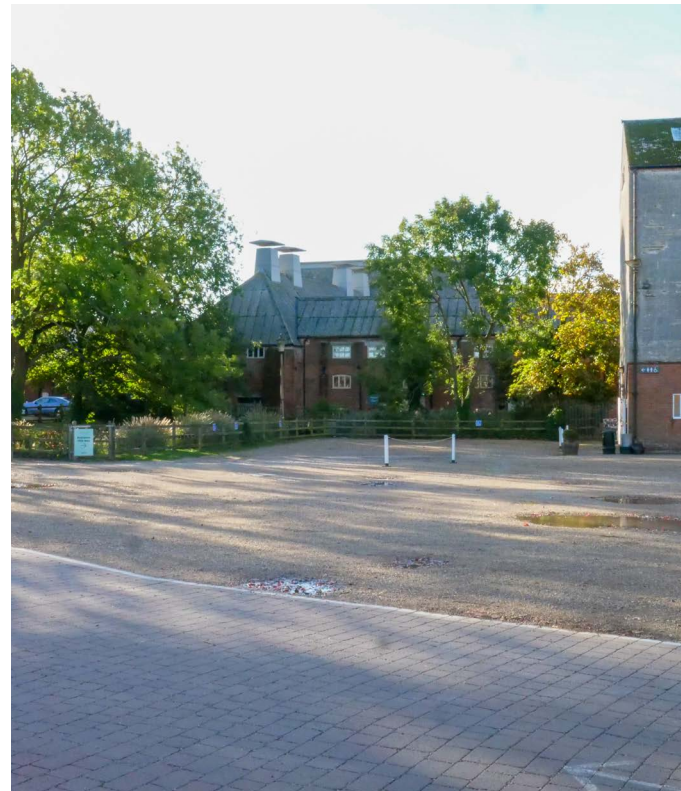
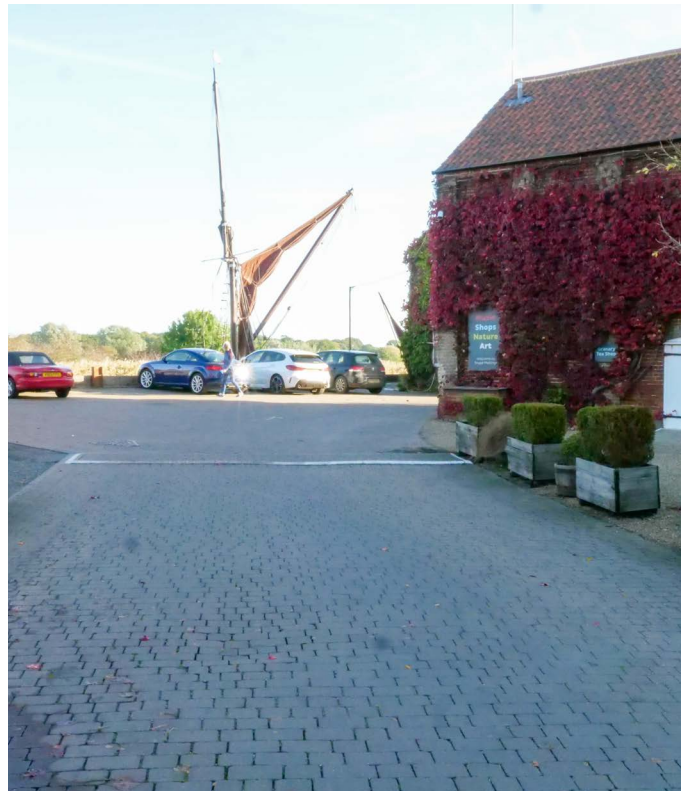
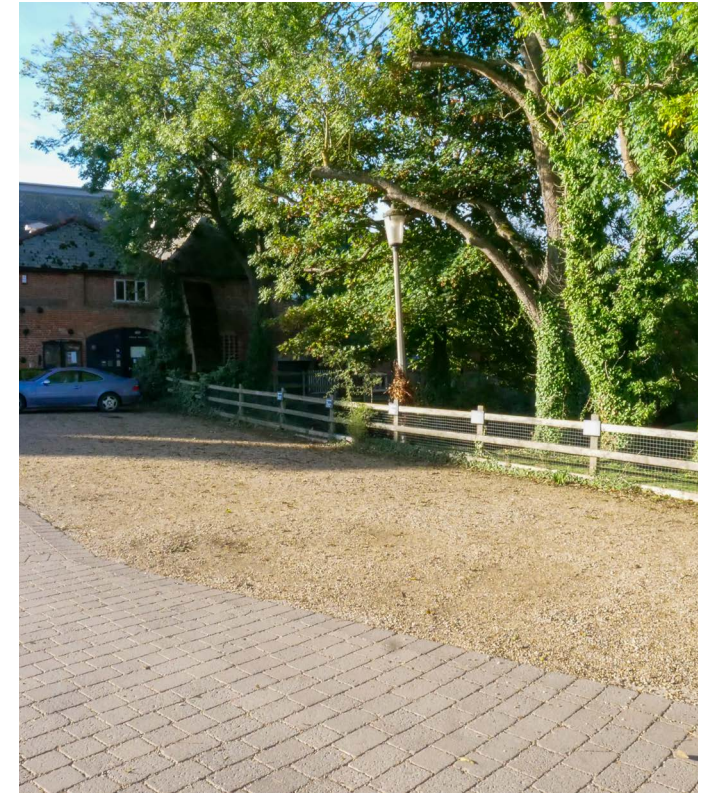
There are plenty of car park spaces. The first one can be found on your righthand side as you go down the road.



More parking can be found to the left of the road a little further down, between the Craft Shop and the Concert Hall.

Blue badge parking can be found opposite the Concert Hall, to the right of the road.

To get to the Hoffmann Building, where the concert will take place, and for more parking spaces follow the road down past the Concert Hall and the Early Music shop.





For more parking spaces, turn left at the end of the road. There is a car park here, behind the Britten Pears Building.

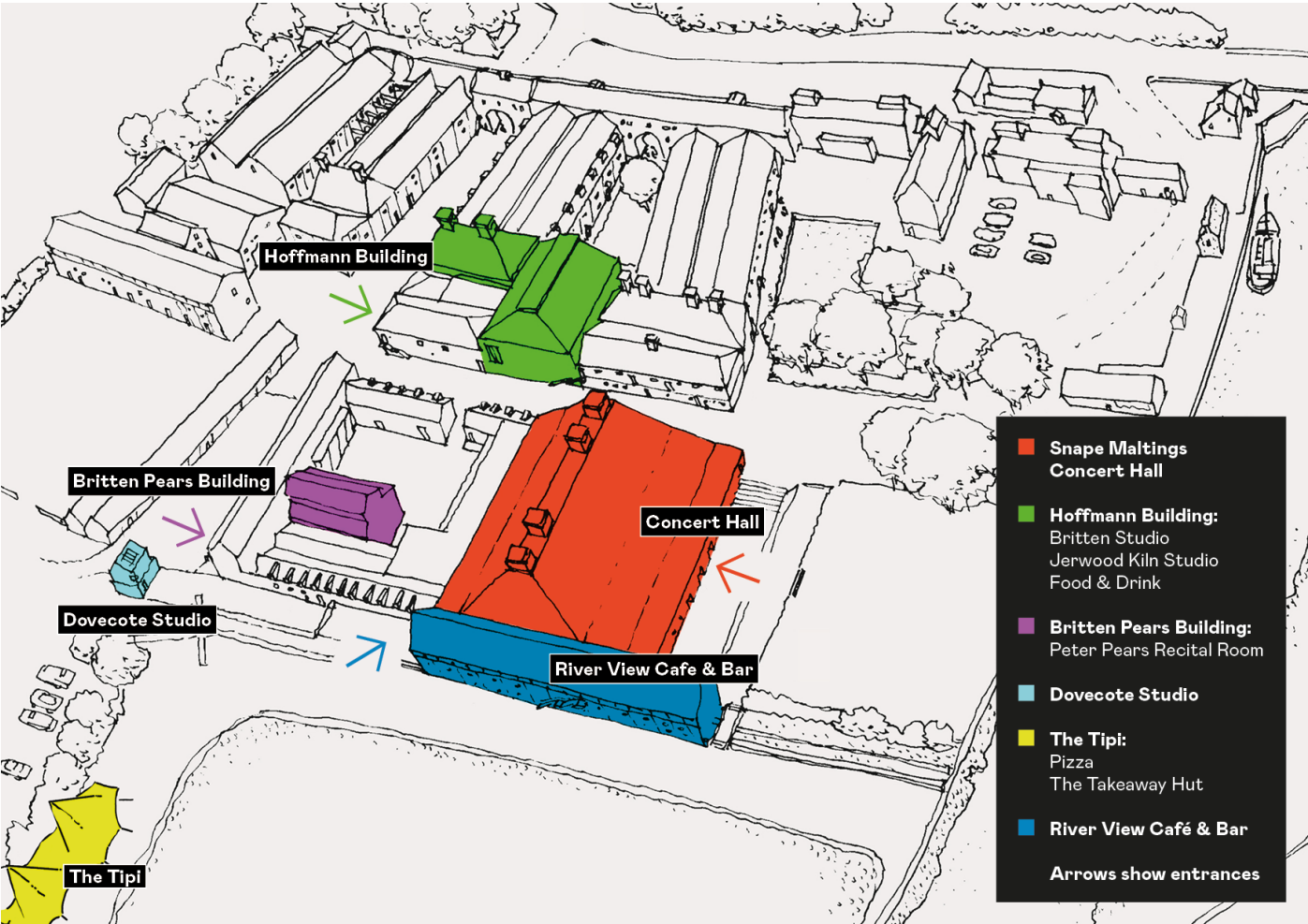
There is also more parking in the field which is just beyond the car park and Britten Pears Building.

More parking can also be found to the right.

There is more blue badge parking directly opposite the entrance to the Hoffmann Building. To get to these spaces turn right at the end of the road and they will be to your left, opposite the doors to the Hoffmann entrance.



Map of Snape Maltings





Getting to the Hoffmann Box Office

The Hoffmann Box Office and Britten Studio are located in the Hoffmann Building. The entrance to this building is through two double doors and there is a sign which says “Hoffmann Building’ next to them.



Getting tickets from Box Office

As you enter the Hoffmann Building, you will see the Box Office straight ahead of you. You will be greeted by a member of the Box Office team who will be able to help you collect your tickets for the performance.



Before the show

If you have time before the show, you can explore the site or get a drink at the Café & Bar.

To get to the café you can walk along the path to the right of the Hoffmann. This path is made of loose gravel and may not be suitable for wheelchairs or buggies.

You will then get to some steps which lead to the Hepworth Lawn. Step count: 4 up, 4 down.

Once you’ve gone over the steps, turn left and follow the path along.

You will then get to some steps which lead to the River View Café & Bar. Step count: 13 up.





Doors to the River View Café & Bar

When you are in the café, you can find a table.

You can place your order at the bar, where a member of the team will serve you.

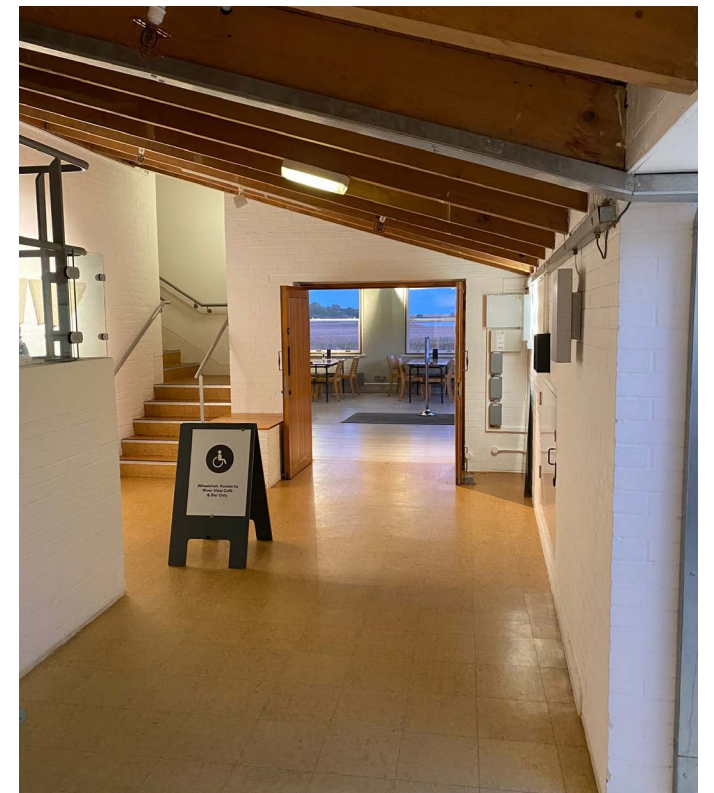
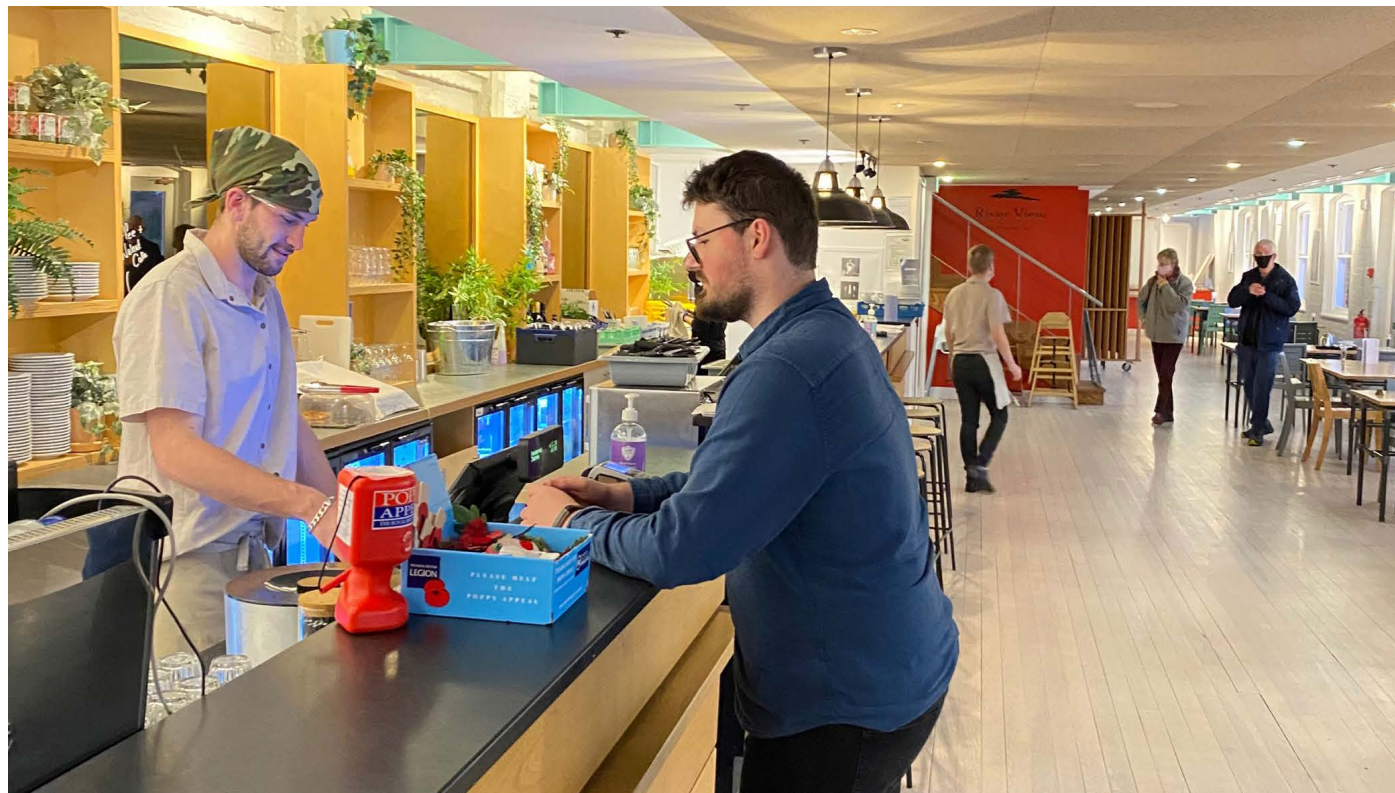
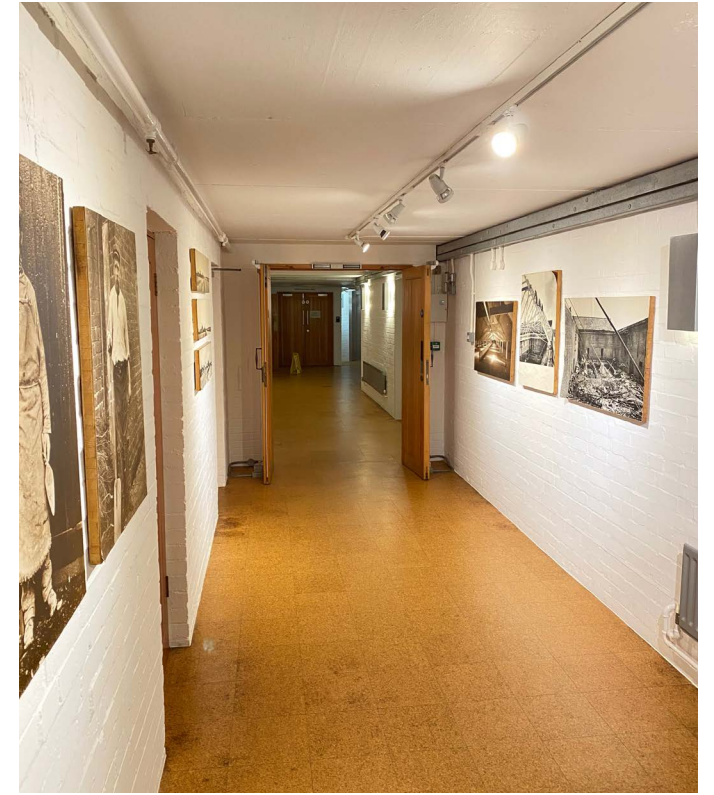


To access the River View Café & Bar by lift, you can enter the building via the door opposite the Snape Antiques Centre, which is half way down the road in picture 7.

Follow the corridor all the way along. The lift is at the end of the corridor on the righthand side.

Call the lift and select floor 2

When you have reached floor 2, the café & Bar will be to your right.

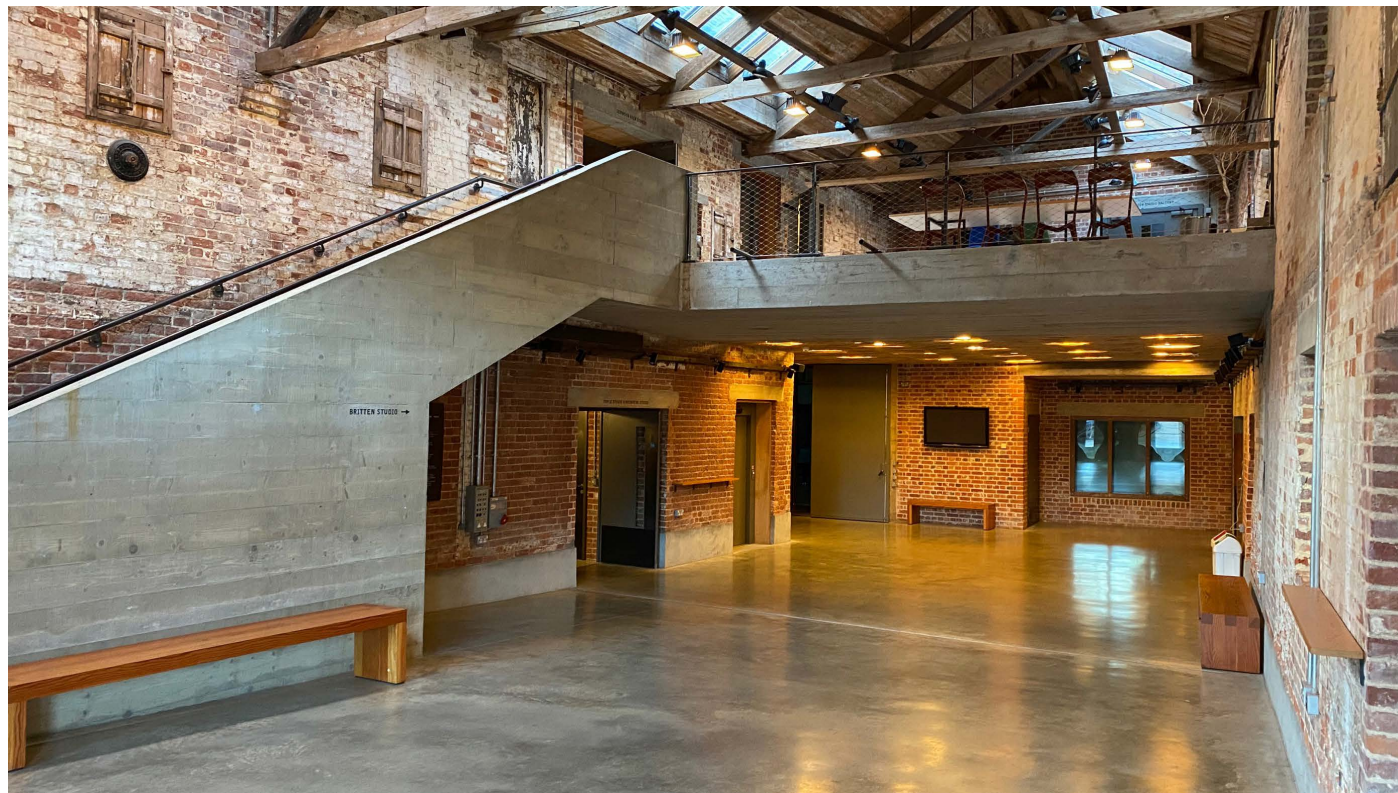




## Finding the Performance Space

To get to the performance space, go through the double doors to the left of the Hoffmann Box Office. You will be greeted by an Usher, who may check your tickets as you enter.

The Britten Studio is to the right of the foyer.



## Before show info

Before the show starts, you can wait in the foyer. You will be able to enter the performance space once the Ushers open the doors. If you need early access to the space please do let an usher know when you arrive and they will be able to help you.

As you enter the Britten Studio, an Usher will greet you at the door to check your tickets.





## Finding your seats

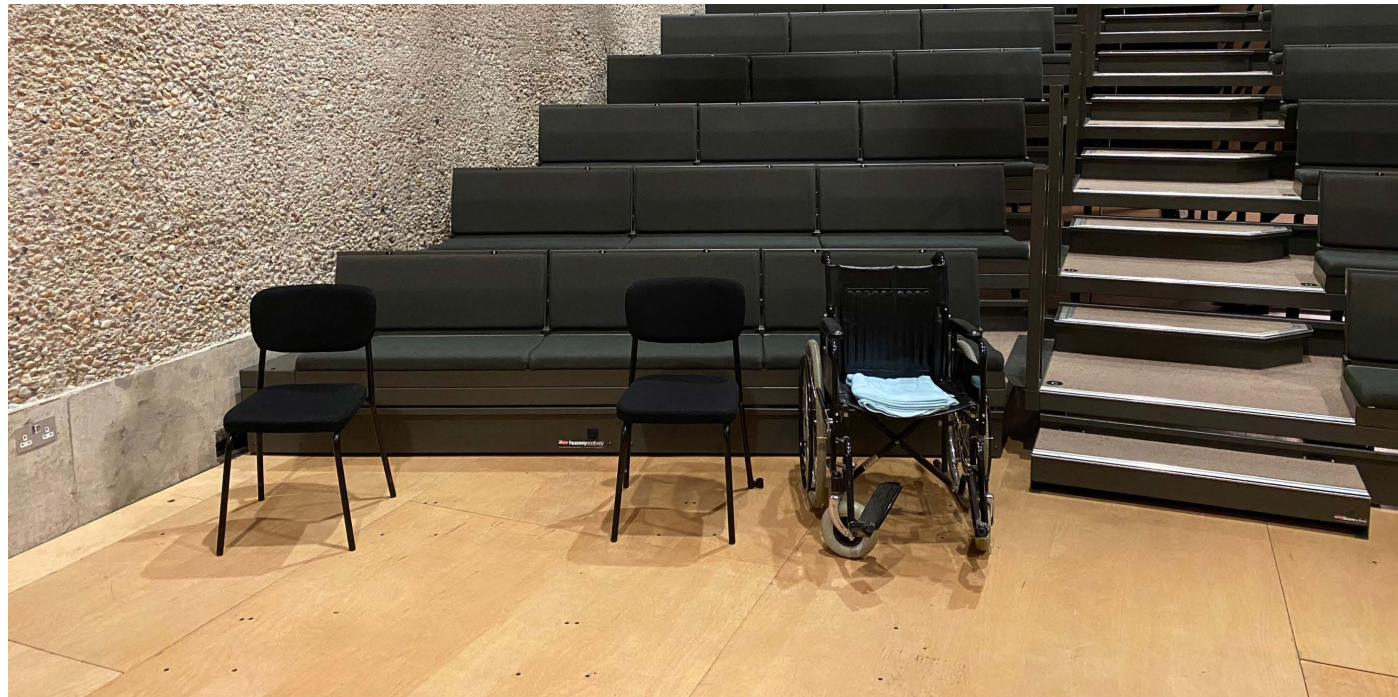
Your seat number can be found on your ticket. Each row of seats has a letter, which is on the floor at the end of each row. The seats have individual numbers, which are on the top of each chair. For example, the seat in this picture is C20. If you need help finding your seat, ask an Usher and they will be able to help you.

There are steps leading up to each row of seats. Step count: 20.



## Wheelchairs

There are wheelchair spaces available at the front in seats A3 – A6. If you require a wheelchair space, please let Box Office know when you are booking your tickets.



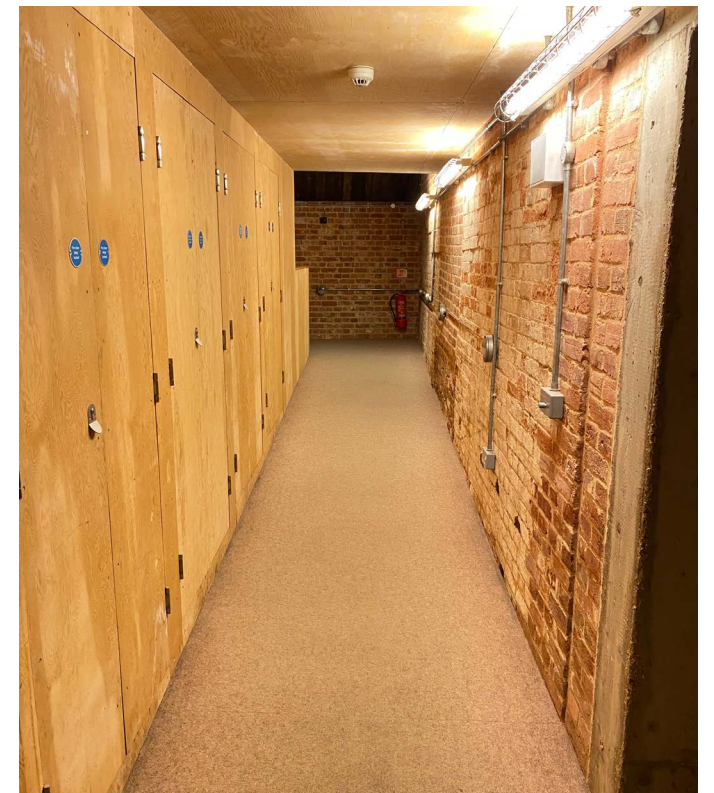
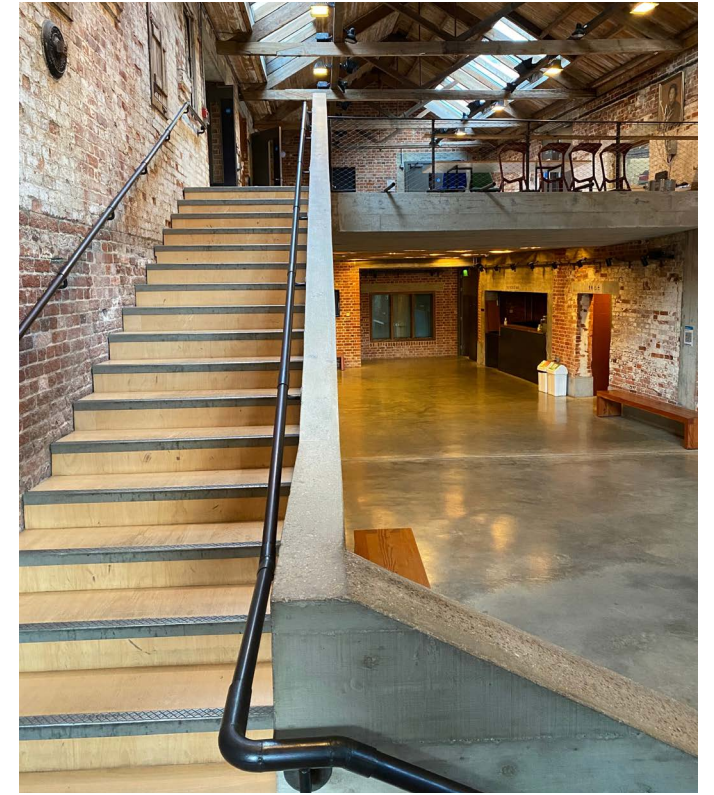
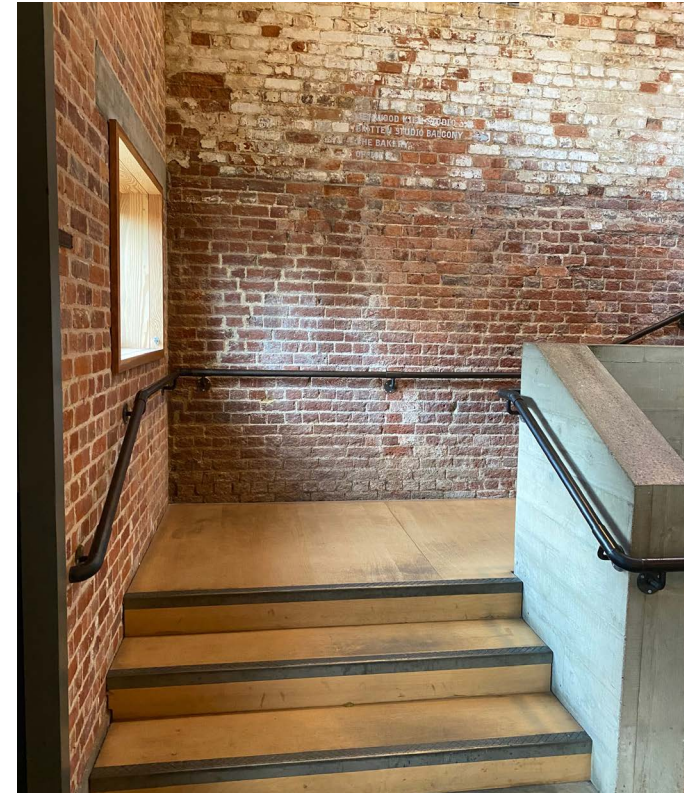
## Accessing Britten Studio from top

If your seats are at the top of the performance space, for example rows L, M, N or O you can get to your seat by going straight to the first floor if you would like to.

You can go up the stairs leading to the Bakery. Step count: 19

The Bakery is a small foyer area with seats, located at the top of the stairs. You can get to the Britten Studio through the door at the back right of the Bakery. There is a sign that says Britten Studio Balcony above the door.

Follow the corridor along and you will get to a door which leads to the Britten Studio.

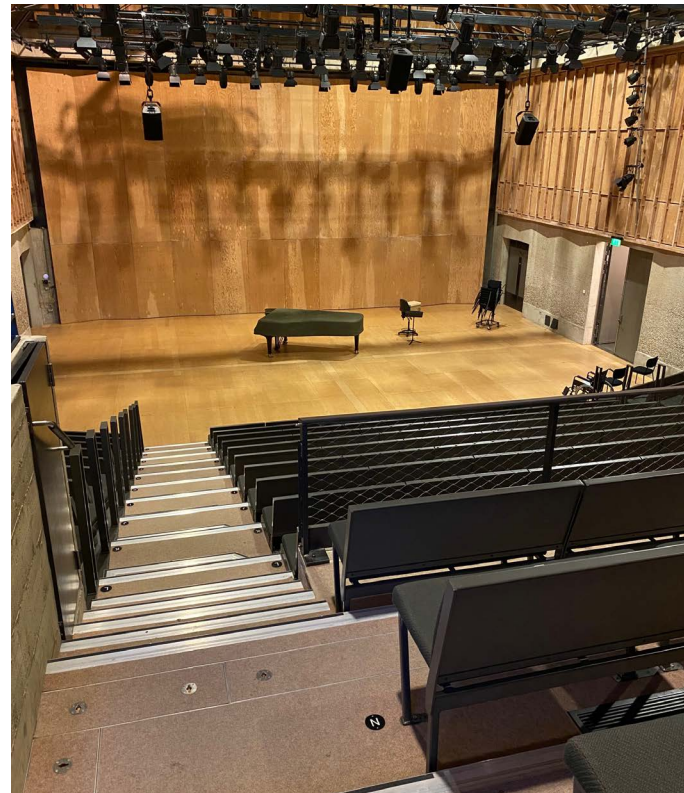




There will also be an Usher to greet you at this door, and they will check your tickets.

A view of the performance space from row O.

The Britten Studio Balcony.



You can also access the first floor via the lift, which is located by the ground floor entrance to the Britten Studio.

When in the lift, press floor 1 and this will take you up to the Bakery.



### Inside the Performance Space

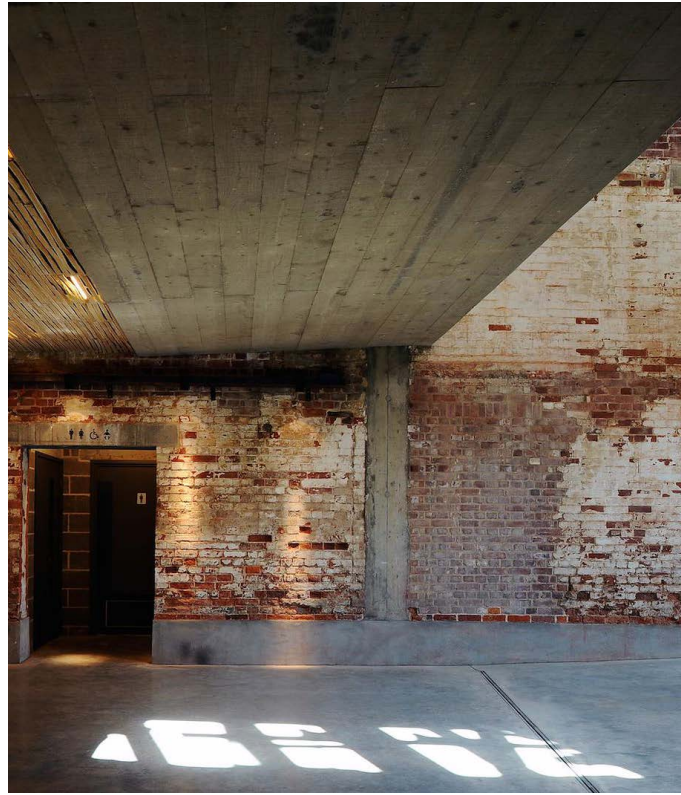
This is what the performance space looks like.



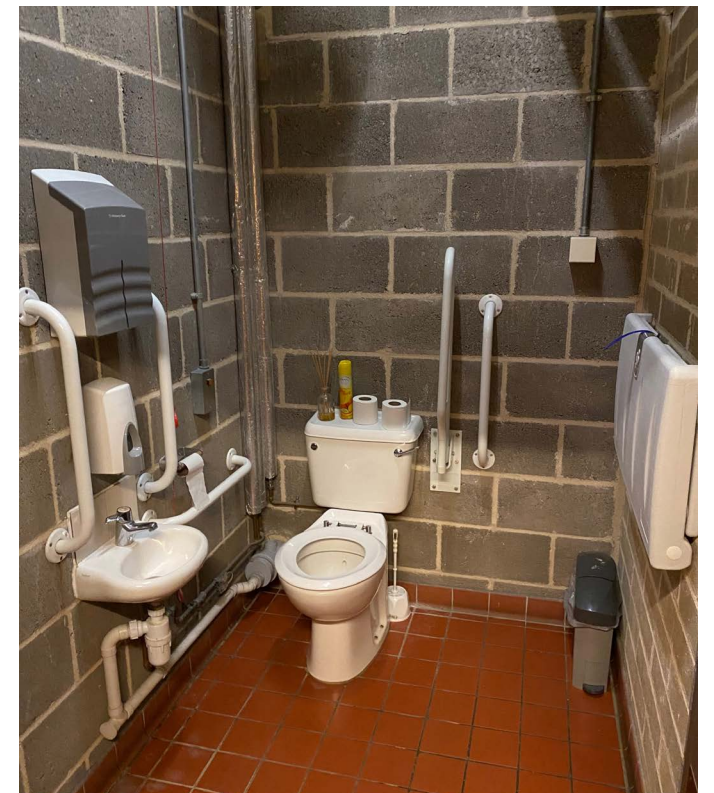
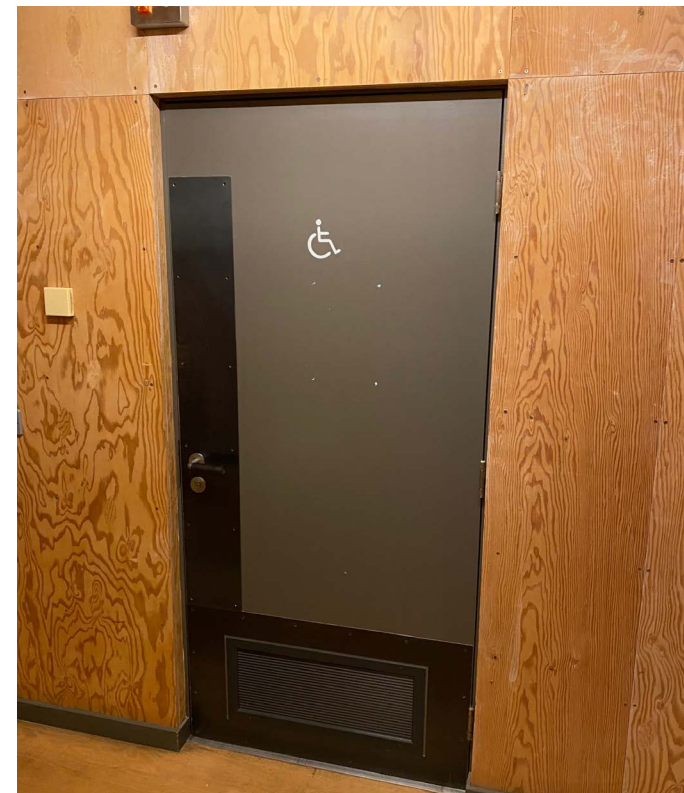
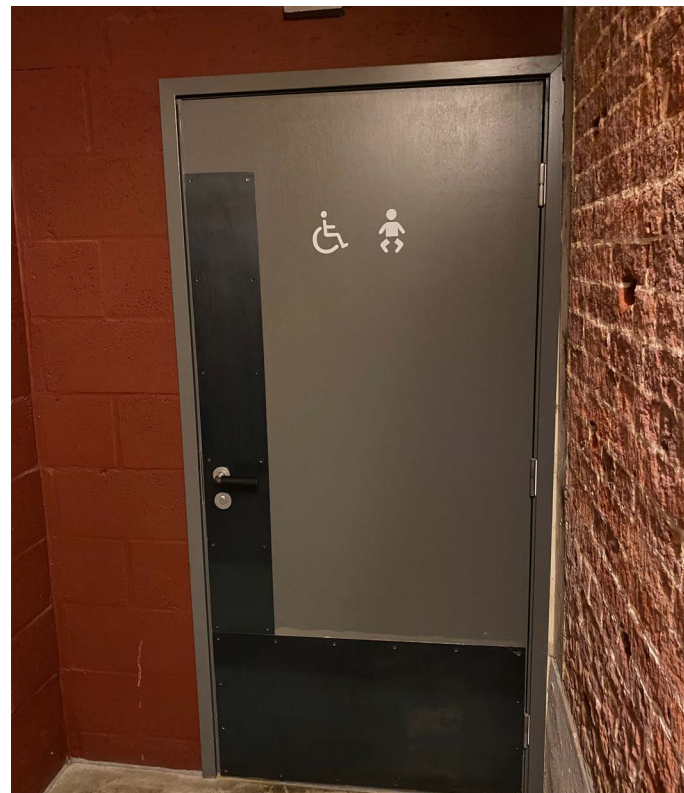
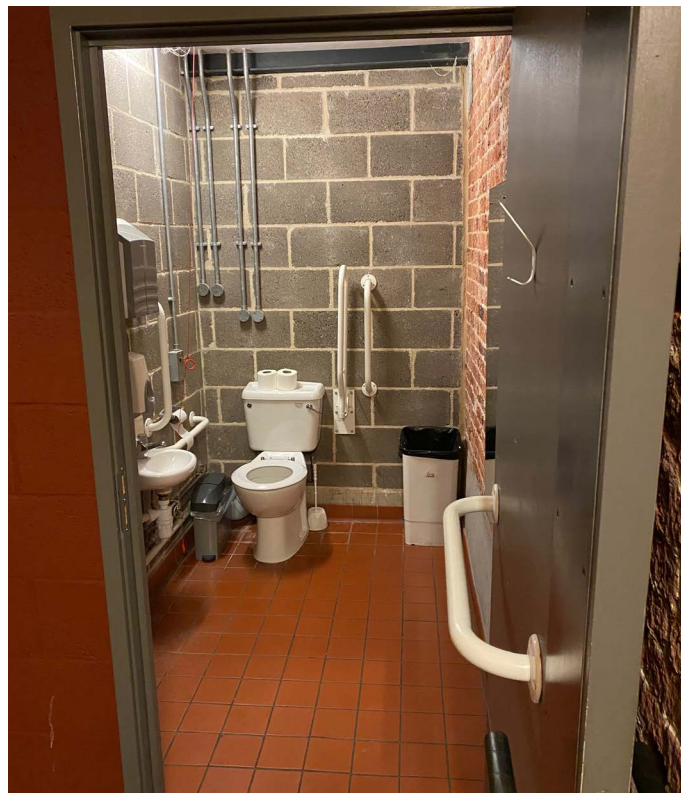


## Toilets

Toilets can be found on the ground floor, to the right of the foyer as you enter the building. There are men's and women's toilets and an accessible toilet, which has baby changing facilities in as well.



There is also an accessible toilet on the first floor. This is to the right as you come out of the lift, and is opposite the Jerwood Kiln Studio.





## Chill Out and Quiet Spaces

There is a chill out space and a quiet space in the Foyle and Weinrebe Studios. You can find these opposite the toilets on the ground floor.

The chill out space is in the Foyle Studio. You can use this space if you need to set out of the performance and can come and find a chair or beanbag to relax in.

The quiet space is in the Weinrebe Studio. You can use this space if you need a bit of quiet away from the performance.



## When the show ends

When the show ends the audience will clap which might be loud! After this it will be time to leave. The audience will start to get up and it might be busy, but you can take your time and wait until it is less busy before you leave if you would like.

